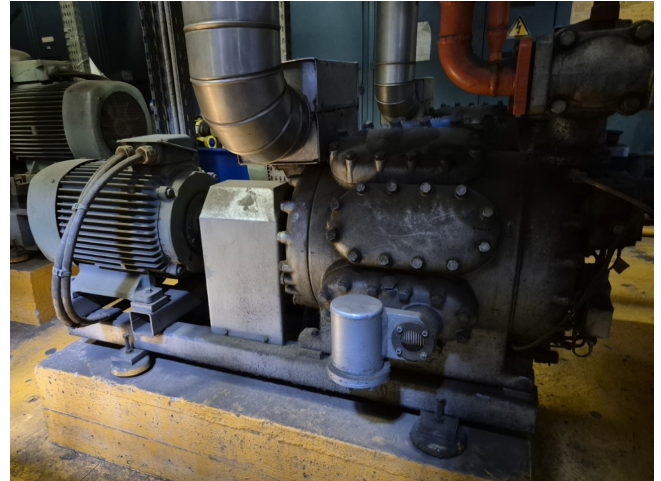


# Sabroe CMO 18

## Specifications

Marque	Sabroe
Le type	CMO 18
Réfrigérant	Freon
kW at 0°C/+40°C	117,2
kW at -5°C/+40°C	93,9
kW at -10°C/+40°C	73,5
kW at -20°C/+40°C	42,1
Électromoteur Specs	50 Hz - 30 kW - 1460 RPM
Contrôle de capacité	✓
Sur le châssis en acier	✓
Interrupteurs de sécurité de pression	✓
Manomètres	✓
Voyant	✓
m <sup>3</sup> / h	150
Stock	1



## Description

### Used Sabroe CMO 18

Used Sabroe CMO 18 reciprocating compressor on Freon. Complete with 1 VEB KMER 200 L4 - 50 Hz - 30 kW - 1460 RPM, pressure and safety switches/gauges. The compressor has a displacement of 150 m<sup>3</sup>/h.

\*Why choose for HOSBV? We're not only the largest used refrigeration specialist in Europe, but also, we deliver all equipment including an extensive test, warranty and industrial cleaning.

\*Optional we can also perform a new paint job and arrange the logistics.

